

OVERALL PRINCIPLE OF LAYOUT

Future layout will adhere strictly to the existing modular grid.

Upon removal of all existing partitions, new solid walls will be established in accordance with the cross lines of the modular grid.

New glass partitions, equally placed in accordance with the modular grid, divides "the mall" from the office space. Doors, as well to "the mall" as inter-offices, are easily installed upon demand.

Impact from sound will be divided into three comfort levels, according to specific demands or wishes. Adherence to each comfort level will be secured by the use of sound reducing surfaces on ceilings, walls and floors.

A new up-to-date ventilation system, based on the latest energy saving principles, will cover the entire building room by room. Overall exhaust demand will be further reduced by a sun protection system, externally installed on all windows.

As a consequence of the future layout, small talk and informal meetings can be expected to take place in "the mall", leaving the office space free for every-day work.

General layout

Triumph Danmark A/S - Espergærde

Modernization of office building

Principle of layout

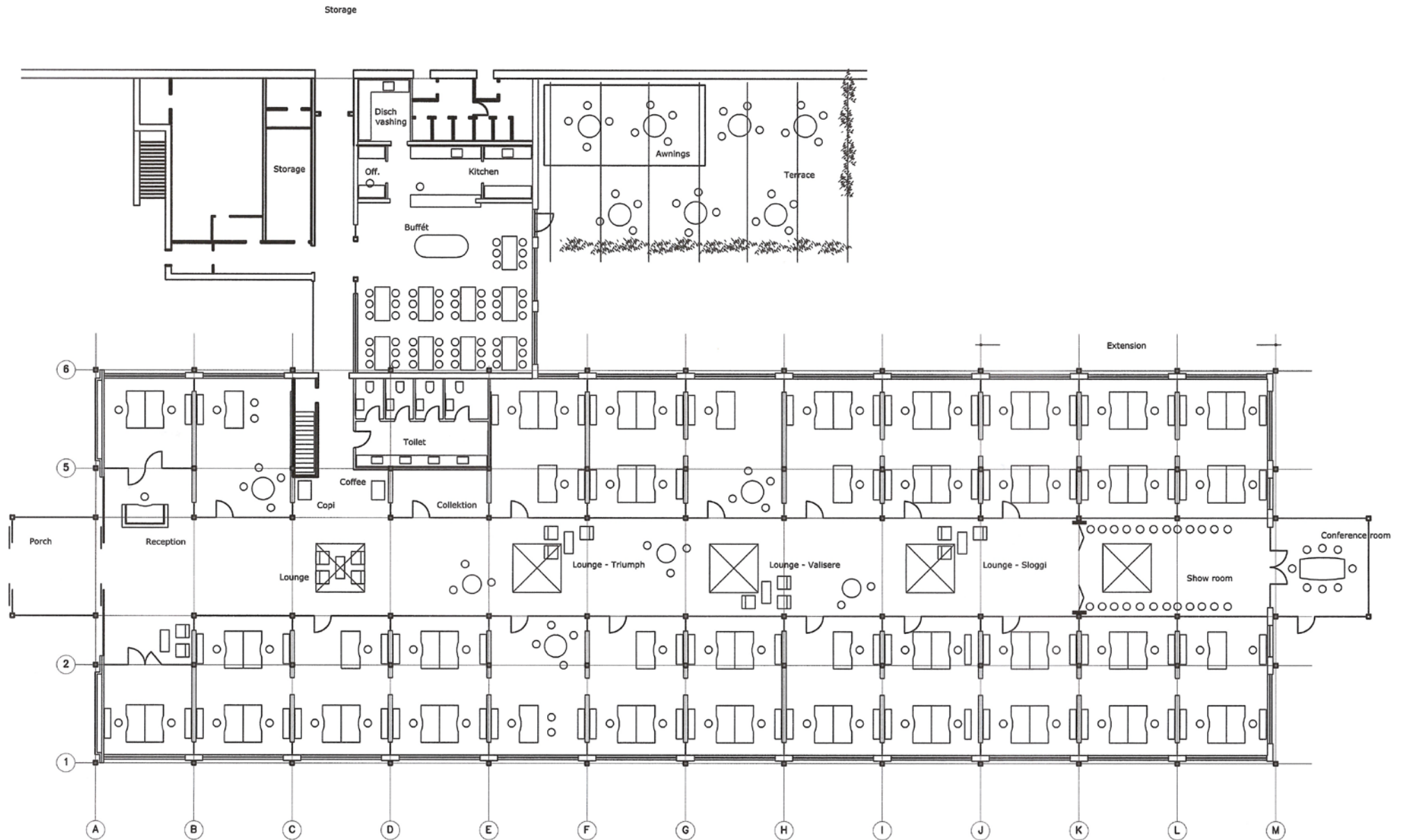
Drawing no.

01

Date :

10.10.11

Scale :



General layout

Triumph Danmark A/S - Espergærde

Drawing no. **02**

Modernization of office building

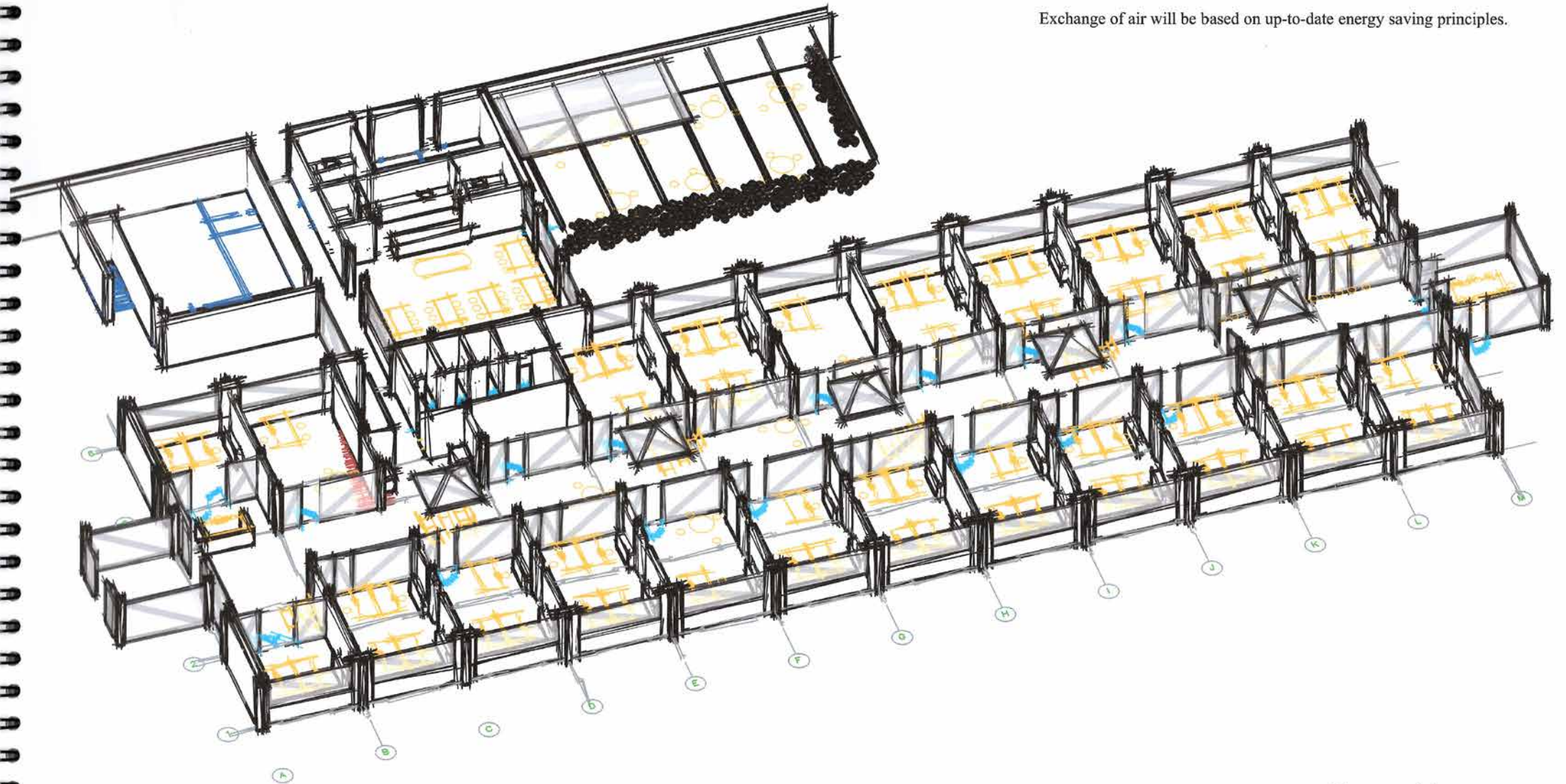
Date : 10.10.11

Layout plan

Scale : 1:200

COMFORT VENTILATION

Exchange of air will be based on up-to-date energy saving principles.



General layout

Triumph Danmark A/S - Espergærde

Modernization of office building

Bird eye view

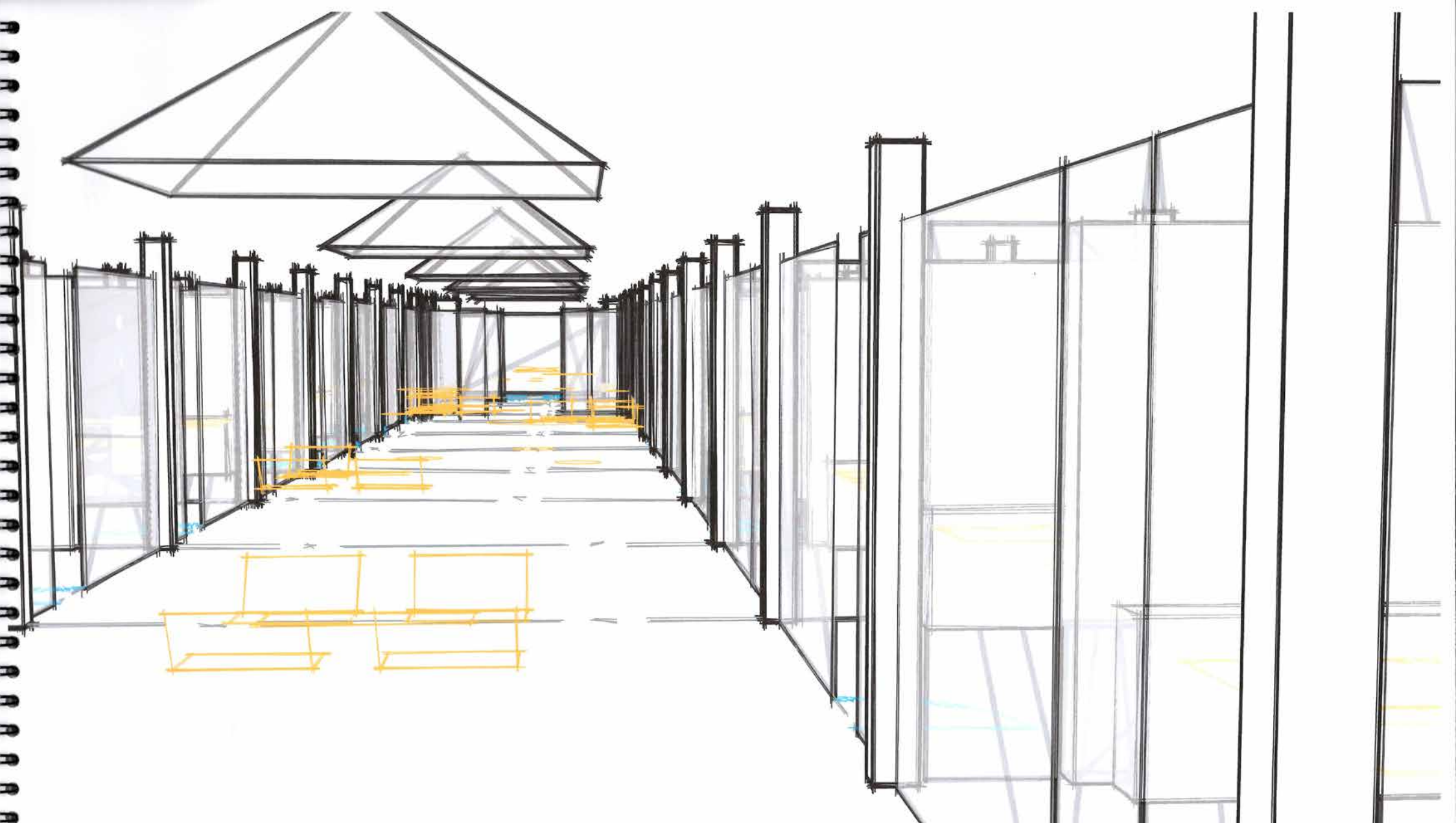
Drawing no.

03

Date :

10.10.11

Scale :



"THE MALL"

The place to meet for interchanges

General layout

Triumph Danmark A/S - Espergærde

Modernization of office building
Perspective - "The Mall"

Mikael Krøll Arkitekter Lindevej 23 A 3060 Espergærde - Denmark.

Drawing no. **05**

Date: 10.10.11

Scale:

Phone +45 49 20 20 20

Conference room

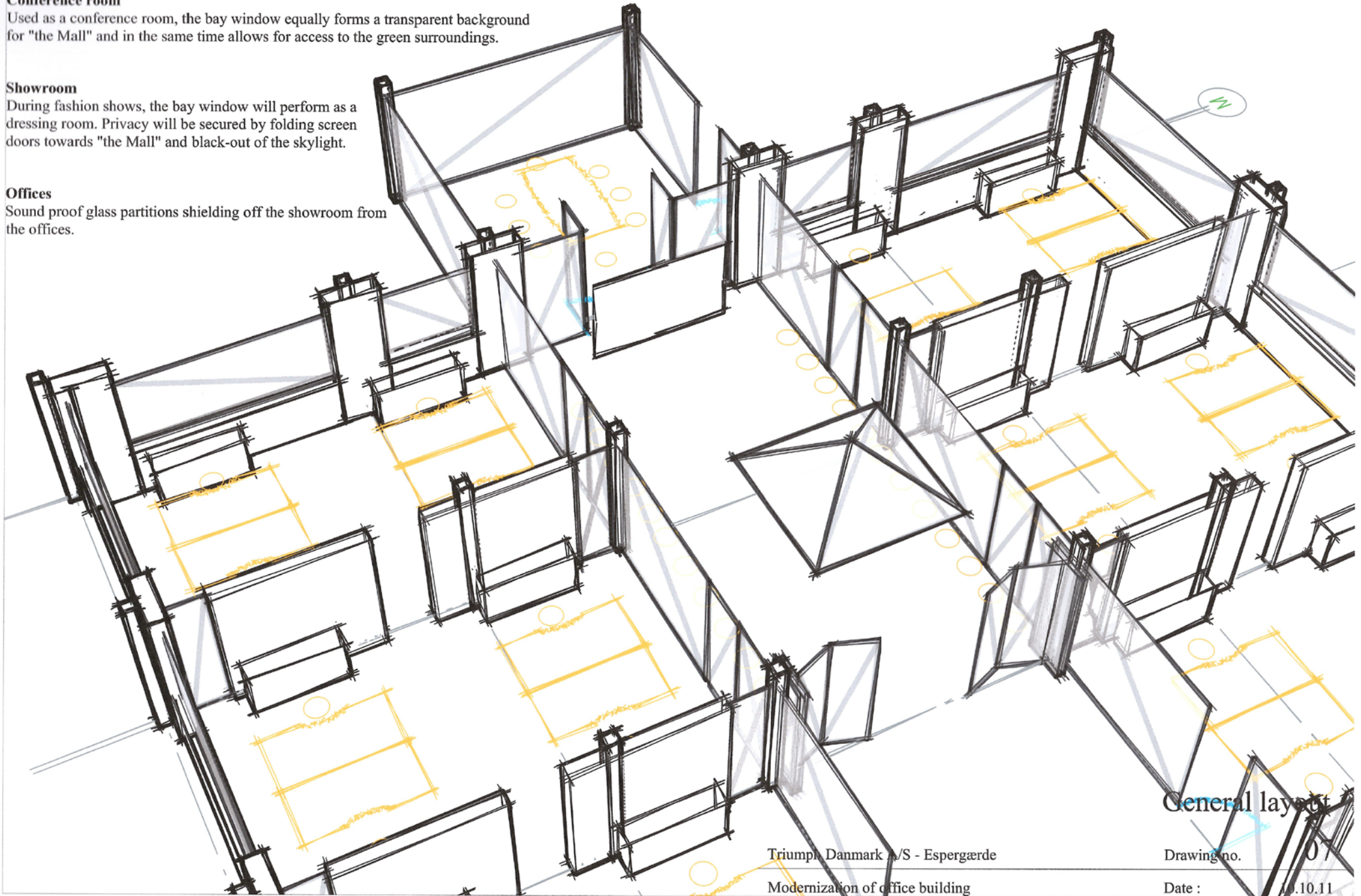
Used as a conference room, the bay window equally forms a transparent background for "the Mall" and in the same time allows for access to the green surroundings.

Showroom

During fashion shows, the bay window will perform as a dressing room. Privacy will be secured by folding screen doors towards "the Mall" and black-out of the skylight.

Offices

Sound proof glass partitions shielding off the showroom from the offices.



General layout

Triumph Danmark A/S - Espergærde

Modernization of office building

Perspective - Showroom

Drawing no. 01

Date : 10.10.11

Scale :